

**IGNITION CONTROLLERS**

Type	Description	Package
L482	Hall Effect Pickup Ignition Controller	DIP16/SO16
L484	Magnetic Pickup Ignition Controller	DIP16/SO16
L497	Hall Effect Pickup Ignition Controller	DIP16/SO16

**FUEL INJECTION**

Type	Description	Package
L584	Multifunction Injection Interface	DIP16

**SINGLE CHIP ELECTRONIC IGNITION**

Type	Description	Package
VB020	Electronic Ignition With Integrated Control And Protection Circuitry	ISOWATT5
VB024	Electronic Ignition With Integrated Control And Protection Circuitry	ISOWATT7
VB027	Electronic Ignition With Integrated Control And Protection Circuitry	TO220-5
VB027SP	Electronic Ignition With Integrated Control And Protection Circuitry	PowerSO-10
VB921ZV	3 Pins Electronic Ignition With Integrated Control And Protection Circuitry	TO-220
VB921ZVSP	3 Pins Electronic Ignition With Integrated Control And Protection Circuitry	PowerSO-10

**ELECTRONIC IGNITION DARLINGTONS**

V <sub>CB0</sub> V <sub>CEs</sub> (V)	V <sub>CEO</sub> (V)	I <sub>c</sub> (A)	P <sub>tot</sub> (W)	Package	Type NPN	h <sub>FE</sub> @ I <sub>c</sub> / V <sub>CE</sub>			V <sub>CEsat</sub> @ I <sub>c</sub> / I <sub>B</sub>		
						min	(A)	(V)	max (V)	(A)	(mA)
350*	350	15	175	TO-3	BU941Z <sup>(1)</sup>	300	5	10	1.8	10	250
350*	350	15	150	TO-218	BU941ZP <sup>(1)</sup>	300	5	10	1.8	10	250
350*	350	15	65	ISOWATT218	BU941ZPFI <sup>(1)</sup>	300	5	10	1.8	10	250
350*	350	15	150	PowerSO-10	BU941ZSM <sup>(1)</sup>	300	5	10	1.8	10	250
350*	350	15	150	TO-220	BU941ZT <sup>(1)</sup>	300	5	10	1.8	10	250
350*	350	15	55	ISOWATT220	BU941ZTFI <sup>(1)</sup>	300	5	10	1.8	10	250
450	400	6	60	TO-220	BU911	20	4	1.8	1.8	2.5	50
450	400	6	60	SOT-82	SGS911	20	4	1.8	1.8	2.5	50
500	450	6	60	TO-220	BU912	20	4	1.8	1.8	2.0	50
500	400	10	150	TO-3	BU931	300	5	10	1.8	8	100
500	400	10	125	TO-218	BU931P	300	5	10	1.8	8	100
500	400	10	60	ISOWATT218	BU931PFI	300	5	10	1.8	8	100
500	400	10	125	PowerSO-10	BU931SM	300	5	10	1.8	8	100
500	400	10	125	TO-220	BU931T	300	5	10	1.8	8	100
500	400	10	45	ISOWATT220	BU931TFI	300	5	10	1.8	8	100
500	400	15	175	TO-3	BU941	300	5	10	1.8	10	250
500	400	15	150	TO-218	BU941P	300	5	10	1.8	10	250
500	400	15	65	ISOWATT218	BU941PFI	300	5	10	1.8	10	250
500	400	15	125	PowerSO-10	BU941SM	300	5	10	1.8	10	250

\* V<sub>CB0</sub> = V<sub>CEO</sub> due to the action of the integrated zener clamp.

\*\* TRILINTON device.

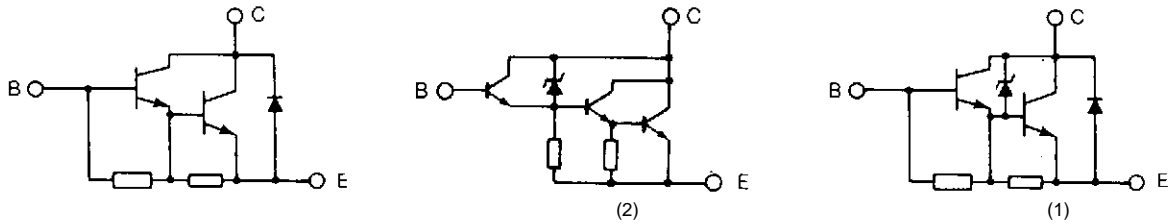
**ELECTRONIC IGNITION DARLINGTONS (cont'd)**

V <sub>CB0</sub> V <sub>CES</sub> (V)	V <sub>CE0</sub> (V)	I <sub>c</sub> (A)	P <sub>tot</sub> (W)	Package	Type NPN	h <sub>FE</sub> @ I <sub>c</sub> / V <sub>CE</sub>			V <sub>CEsat</sub> @ I <sub>c</sub> / I <sub>B</sub>		
						min	(A)	(V)	max (V)	(A)	(mA)
500	400	15	125	TO-220	BU941T	300	5	10	1.8	10	250
500	400	15	55	ISOWATT220	BU941TFI	300	5	10	1.8	10	250
650**	375	5	100	TO-220	BU900DT <sup>(2)</sup>	7000	1	5.0	4.0	3.0	3

\* V<sub>CB0</sub> = V<sub>CE0</sub> due to the action of the integrated zener clamp.

\*\* TRILINTON device.

Internal schematic diagrams



**ALTERNATOR REGULATORS**

Type	Description	Package
L585	Car Alternator Regulator	DIP16
L9444VB	One Chip Car Alternator Regulator	TO-220
L9448VB	One Chip Car Alternator Regulator	TO-220
L9480VB	One Chip Car Alternator Regulator	TO-220

**POWER ACTUATORS**

ICs

Type	Description	Package
L9222	Quad Inverting Transistor Switch	DIP16
L9305A	Dual High Current Relay Drivers	DIP16
L9307	Dual High Current Low Side Driver	MULTIWATT11
L9309	Dual High Current Low Side Driver	SIP10
L9308	Dual Low Side Driver	MINIDIP
L9326	Dual IPS	SO24
L9338	Quad Low-Side Driver	SO20
L9341	Quad Low-Side Driver	MULTIWATT 15
L9351	High Side Driver	PENTAWATT®
L9363	Quad Low-Side Driver	MULTIWATT 15
L9386MD	Dual Intelligent Power Low Side	SO20
L9820	High Side Driver	MINIDIP/SO8
L9820D	High Side Driver	SO8
L9821	High Side Driver (for trucks - R <sub>DS(on)</sub> 0.1 Ω)	PENTAWATT
L9822E	Octal Serial Solenoid Driver	MULTIWATT® 15
L9822ED	Octal Serial Solenoid Driver	SO20
L9822EPD	Octal Serial Solenoid Driver	PowerSO-20
L9822N	Octal Serial Solenoid Driver	PowerSO-20
L9824	Octal Parallel Low Side Driver	DIP20
L9824D	Octal Parallel Low Side Driver	SO20

**POWER ACTUATORS (cont'd)**

ICs

Type	Description	Package
L9836MD	Dual Intelligent Power Low Side	SO20
L9907ND	Motor Bridge for Hoadlight Adjustment	SO20
L9930	Dual Full Bridge	MULTIWATT 11
L9947	Quad Half-Bridge High-Side Driver	MULTIWATT 15
VN02N/SP	High Side Driver - $R_{DS(on)}$ 0.4 $\Omega$	PENTAWATT/PowerSO-10
VN05N/SP	High Side Driver - $R_{DS(on)}$ 0.18 $\Omega$	PENTAWATT/PowerSO-10
VN20N/SP	High Side Driver - $R_{DS(on)}$ 0.05 $\Omega$	PENTAWATT/PowerSO-10
VN30N/SP	High Side Driver - $R_{DS(on)}$ 0.03 $\Omega$	PENTAWATT/PowerSO-10
VN03/SP	I.S.O. High Side Driver - $R_{DS(on)}$ 0.5 $\Omega$	PENTAWATT/PowerSO-10
VN06/SP	I.S.O. High Side Driver - $R_{DS(on)}$ 0.18 $\Omega$	PENTAWATT/PowerSO-10
VN21/SP	I.S.O. High Side Driver - $R_{DS(on)}$ 0.05 $\Omega$	PENTAWATT/PowerSO-10
VN31/SP	I.S.O. High Side Driver - $R_{DS(on)}$ 0.03 $\Omega$	PENTAWATT/PowerSO-10
VND05B/SP	Dual High Side Driver - $R_{DS(on)}$ 0.4 $\Omega$ per channel	HEPTAWATT-PowerSO-10
VND10B/SP	Dual High Side Driver - $R_{DS(on)}$ 0.1 $\Omega$ per channel	HEPTAWATT-PowerSO-10
VN16B/SP	High Side Driver - $R_{DS(on)}$ 0.06 $\Omega$	PENTAWATT-PowerSO-10
VNP35N07	3pins Fully protected MOS - $R_{DS(on)}$ 0.028 $\Omega$	TO-220
VNH100N04	3pins Fully protected MOS - $R_{DS(on)}$ 12 m $\Omega$	TO-218
VNH50N04	3pins Fully protected MOS - $R_{DS(on)}$ 12 m $\Omega$	TO-218
VNH70N07	3pins Fully protected MOS - $R_{DS(on)}$ 15 m $\Omega$	TO-218
VNK10N06	3pins Fully protected MOS - $R_{DS(on)}$ 150 m $\Omega$	SOT-82
VNP10N06	3pins Fully protected MOS - $R_{DS(on)}$ 150 m $\Omega$	TO-220
VNP10N07	3pins Fully protected MOS - $R_{DS(on)}$ 100 m $\Omega$	TO-220
VNP14N04	3pins Fully protected MOS - $R_{DS(on)}$ 70 m $\Omega$	TO-220
VNP20N07	3pins Fully protected MOS - $R_{DS(on)}$ 50 m $\Omega$	TO-220
VNP28N04	3pins Fully protected MOS - $R_{DS(on)}$ 35 m $\Omega$	TO-220
VNP35N07	3pins Fully protected MOS - $R_{DS(on)}$ 28 m $\Omega$	TO-220
VNP35N07FI	3pins Fully protected MOS - $R_{DS(on)}$ 28 m $\Omega$	ISOWATT220
VNP49N04	3pins Fully protected MOS - $R_{DS(on)}$ 20 m $\Omega$	TO-220
VNP5N07	3pins Fully protected MOS - $R_{DS(on)}$ 200 m $\Omega$	TO-220
VNP7N04	3pins Fully protected MOS - $R_{DS(on)}$ 140 m $\Omega$	TO-220
VNV35N07	3pins Fully protected MOS - $R_{DS(on)}$ 28 m $\Omega$	POWER SO-10
VNV10N07	3pins Fully protected MOS - $R_{DS(on)}$ 100 m $\Omega$	POWER SO-10
VNV14N04	3pins Fully protected MOS - $R_{DS(on)}$ 70 m $\Omega$	POWER SO-10
VNV20N07	3pins Fully protected MOS - $R_{DS(on)}$ 50 m $\Omega$	POWER SO-10
VNV28N04	3pins Fully protected MOS - $R_{DS(on)}$ 35 m $\Omega$	POWER SO-10
VNV49N04	3pins Fully protected MOS - $R_{DS(on)}$ 20 m $\Omega$	POWER SO-10
VND10N06-1	3pins Fully protected MOS - $R_{DS(on)}$ 150 m $\Omega$	IPAK